

EXTRAORDINARY, UNIQUE, REFRESHING

BOAT TOUR EXPERIENCES FOR GROUPS



Our tours
2023





LOW SEASON

02 April – 17 May
& 04 – 15 October



HIGH SEASON

18 May – 03 October



CH



BOAT TOUR EXPERIENCES AN OVERVIEW

CRUISE SCHEDULE

4

ROUND TRIPS

5-11

SCENIC CRUISES

12 - 16

EXCURSION TIPS

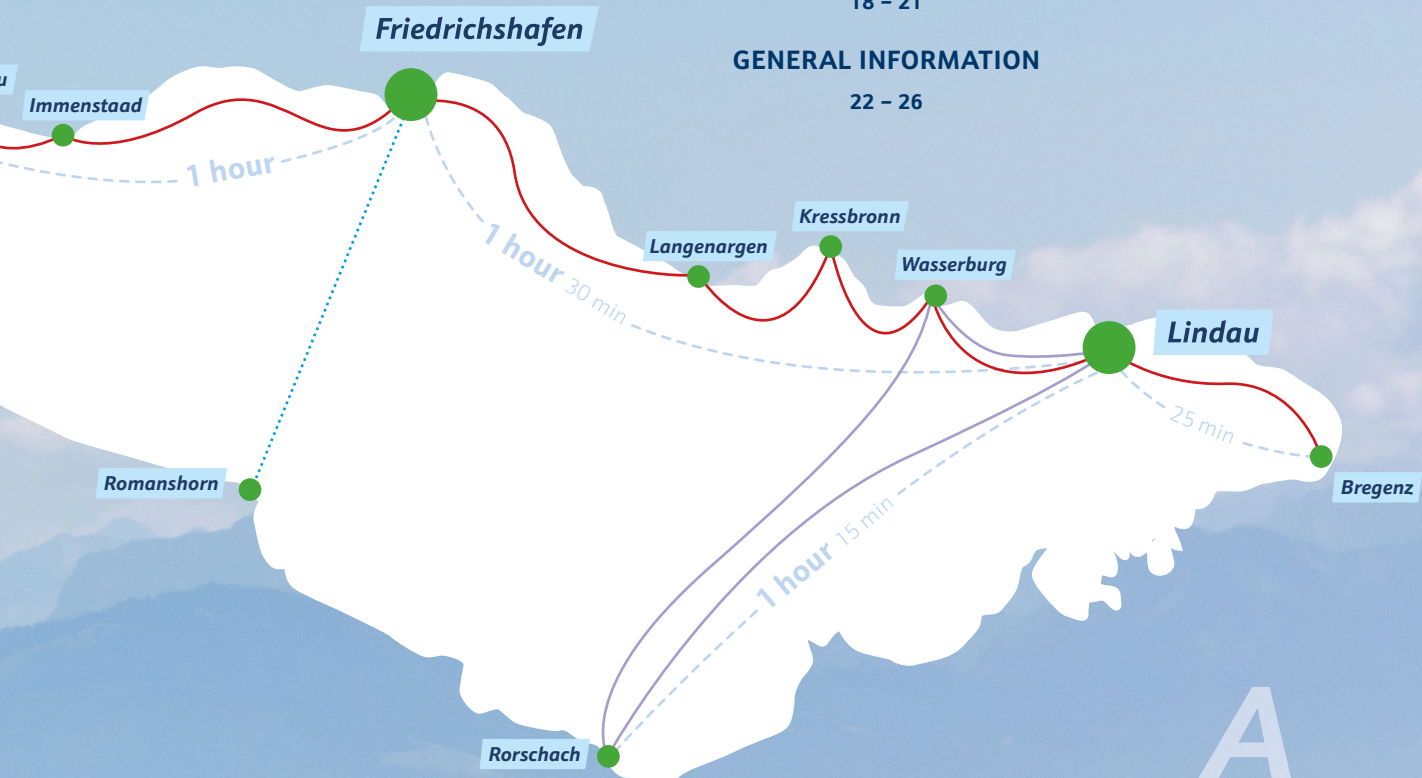
17

EVENTS

18 - 21

GENERAL INFORMATION

22 - 26



Please note: The illustration is intended for rough orientation at the lake and is not to scale.

CRUISE SCHEDULE

SCHEDULED ROUND TRIPS BY SEASON		PAGE
Radolfzell, Iznang, Reichenau 02 Apr – 15 Oct	Roundtrip lower lake	5
Contance, Meersburg, Mainau, Überlingen, Unteruhldingen 02 Apr – 15 Oct	Roundtrip Überlinger See	6 – 7
Hagnau, Immenstaad, Freidrichshafen, Langenargen, Kressbronn, Nonnenhorn, Wasserburg 02 Apr – 15 Oct	Roundtours with start in the Upper lake (Obersee)	8
Lindau & Lindau Spielbank 28 Mar – 05 Nov	Round trips from Lindau	9 – 10
Constance & Lindau 21 Oct – 17 Dec	Autumn & winter at Lake Constance	11

SCENIC CRUISES & EVENTS

APRIL

09 Apr	Osterbrunch	12
16 Apr – 14 May	Spargel-Genuss	12

MAY

14 May	Muttertagsfahrt	13
19 May – 30. Sept	Grill-Fahrt	13
20. May	Stimmungsvolles Weinpröble	13
24 May – 27 Sept	Pizza-Pasta-Fahrt	14

JUNE

09 June	Accompanying trip to the Regatta RUND UM	20
16 June + 15 Sept	Weinpröble in Lake Überlingen	14
23 June	Weinpröble in Upper Lake	14

JULY

02 July	Bayrisches Frühstück	15
15 July	Round trip Seehasenfest	21
15 July	Seehasen Shuttle	20
16 July	Round trip Hausherrenfest	21
21 + 28 July	Festspielkreuzfahrt Bregenz	18
on all performance days	Festspiel-Shuttle & Schiff-Bus Transfer Bregenzer Festspielen	19
22. July	Hafenfest UHldingen spectator ship	20
29. July	Uferfest Langenargen spectator ship	21

AUGUST

01 Aug	Schweizer Nationalfeiertag spectator ship	20
02 – 05 Aug	Shuttle to Mainau Musical Nights	20
04 – 06 Aug	Reichenauer Weinfest-Shuttle	20
04 + 11 Aug	Festspielkreuzfahrt Bregenz	18
12 Aug	Konstanzer Seenachtfest: Different offers	21

SEPTEMBER

10 Sept	Bayrisches Frühstück	14
16 June + 15 Sept	Weinpröble in Lake Überlingen	13

OCTOBER

01 + 03 Oct	Herbstschlemmerei	15
04 – 15 Oct	Zwiebelkuchen-Fahrt	15

NOVEMBER

11 + 18 Nov	Gänse-Schmaus	15
24 Nov – 17 Dez	Adventsfahrt	16

DECEMBER

31 Dec	New year's eve: more info in autumn on our website	20
--------	---	----

Roundtrips

Radolfzell

Iznang

Reichenau

ROUND TRIP LOWER LAKE

Price
per person
from 12,20€

Lower lake - a primeval cultural landscape with German and Swiss shores. Discover the famous World Heritage Site with its three medieval churches, which once belonged to the Reichenau monastery. In between, vegetables, herbs and wine thrive in the market gardens, fields and vineyards. And with each ringing of the bells, the triad of this special, but completely unexciting island world resounds: naturalness and authenticity.

OUR ROUNDTRIP RATES

PRICE PER PERSON IN GROUP

12,20€

FROM RADOLFZELL

Thu - So & holidays,
02 April - 30 June +
11 September - 15 October

daily,
01 July - 10 September

DEPARTURE	ARRIVAL
09:25	11:05
11:25	13:10
14:25	16:05
16:25	17:50

ADDITIONAL TRIPS

daily,
01 July - 10 September

DEPARTURE	ARRIVAL
18:00*	19:25

FROM IZNANG

Thu - So & holidays,
02 April - 30 June +
11 September - 15 October

daily,
01 July - 10 September

DEPARTURE	ARRIVAL
09:35	10:50
11:35	13:00
14:35	15:50

ADDITIONAL TRIPS

daily,
01 July - 10 September

DEPARTURE	ARRIVAL
18:10*	19:15

FROM REICHENAU

Thu - So & holidays,
02 April - 30 June +
11 September - 15 October

daily,
01 July - 10 September

DEPARTURE	ARRIVAL
10:20 **	12:15
15:20 **	17:15

ADDITIONAL TRIPS

daily,
01 July - 10 September

DEPARTURE	ARRIVAL
17:15*	18:35

* not on 01 + 12.08.

** 20 min stay in Radolfzell

More info at:





ROUND TRIPS

LAKE ÜBERLINGEN

Take your guests on a tour of the Überlinger-See aboard one of our vessels. There's picturesque Meersburg, Mainau Island (the "Flower Island"), the ancient (stilt-mounted) Lake Dwellings, the late baroque church of Birnau and Überlingen, which has one of Lake Constance's longest promenades.

During the cruise, your guests can enjoy some fantastic views of unique excursion destinations and the wonderful shoreline.

FROM ÜBERLINGEN High season, daily	
DEPARTURE	ARRIVAL
10:10	14:00
12:10	16:00
14:10 ²	18:00
16:10	19:55

FROM ÜBERLINGEN Low season, daily	
DEPARTURE	ARRIVAL
11:10	14:50
13:10	16:50

FROM DINGELSDORF High season, daily	
DEPARTURE	ARRIVAL
9:50	10:20
10:20	13:45
11:45	12:20
12:20	15:45
12:45 ¹	13:20
13:45	14:20
14:20 ²	17:45
15:45	16:20
17:45	18:20

FROM DINGELSDORF Low season, daily	
DEPARTURE	ARRIVAL
10:45	11:20
11:20	15:05
12:45	13:20
13:20	17:05

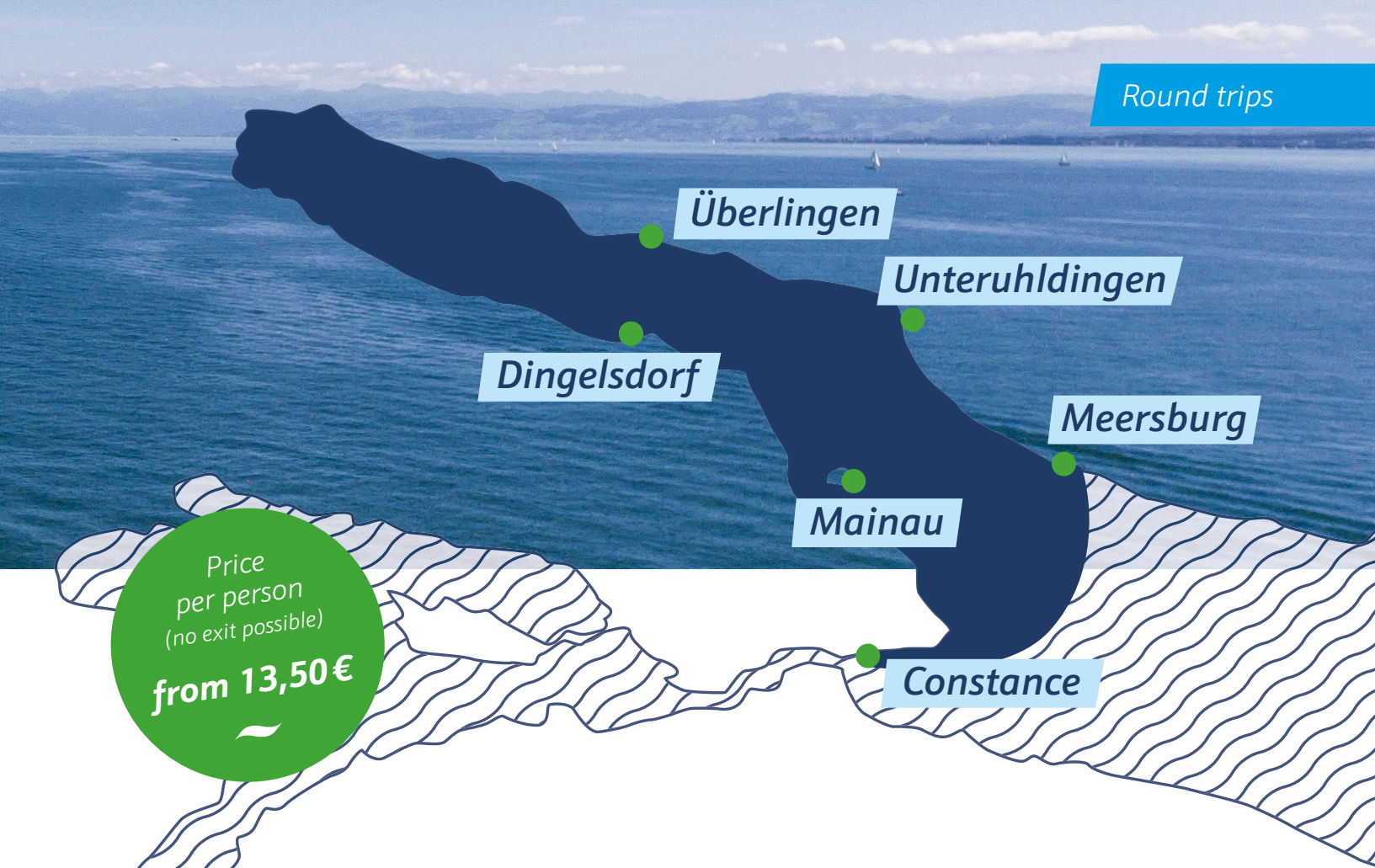
FROM UNTERUHLINGEN High season, daily	
DEPARTURE	ARRIVAL
09:20	10:40
10:40	13:25
11:25	12:40
12:25 ¹	13:40
12:40	15:25
13:25	14:40
13:40 ¹	14:45
14:40 ²	17:25
15:25	16:40
16:40	19:25
17:25	18:50
19:25 ²	20:35

FROM UNTERUHLINGEN Low season, daily	
DEPARTURE	ARRIVAL
10:25	11:40
11:40	14:25
12:25	13:40
13:40	16:25
14:25	15:25
16:25	17:35

FROM MAINAU High season, daily	
DEPARTURE	ARRIVAL
09:30	10:50
10:55	13:10
11:15	12:50
12:15 ¹	13:50
12:55	15:10
13:15	14:50
13:55 ¹	15:05
14:55 ²	17:10
15:15	16:50
16:55	19:10
17:15	18:40
19:15 ²	20:25

FROM MAINAU Low season, daily	
DEPARTURE	ARRIVAL
10:15	11:50
10:30	12:10
11:55	14:10
12:15	13:50
13:55	16:10
14:15	15:35
16:15	17:25

¹ from 18.05. - 30.06. + 11.09. - 03.10. only on Sat., Sun., holidays, otherwise daily
² not on 12.08.
³ round trip in the Upper lake



Price per person (no exit possible)
from 13,50€

FROM MEERSBURG
High season, daily

DEPARTURE	ARRIVAL
09:00	11:15
10:50	13:15
11:25	12:40
11:50 ¹	14:15
12:50	15:15
13:25	14:40
14:25 ¹	15:30
14:50	17:15
15:25 ²	16:40
16:50	19:10
17:25	18:40
18:50 ²	20:55

FROM MEERSBURG
Low season, daily

DEPARTURE	ARRIVAL
09:50	12:15
10:10	11:40
11:50	14:15
12:25	13:40
13:50	16:00
14:25	15:40
15:50	17:55
16:10	17:20

FROM CONSTANCE
High season, daily

DEPARTURE	ARRIVAL
08:30	11:55
08:50 ³	12:35
10:10	13:55
12:10	15:55
12:45 ³	16:10
14:10	17:55
16:10	19:40
16:20 ³	20:05
18:10 ²	21:25

FROM CONSTANCE
Low season, daily

DEPARTURE	ARRIVAL
09:10	12:55
09:35	11:00
11:10	14:55
13:10	16:40
14:45	16:05
15:10	18:25
16:50	17:55

OUR ROUND TRIPS RATES *

PRICE PER PERSON IN GROUP
13,50€

* Round trip on the regular service from any port of departure without disembarkation.

Make a great offer for your guests with our round trip ticket for € 13.50 p.p. or enable them to spend a whole day on the Überlinger See with a day ticket.

Would you like to order lunch or coffee & cake in advance? We will be happy to send you the offers of our caterers on request.

More info at:





ROUND TRIPS

WITH START IN THE UPPER LAKE

Price per person
(no exit possible)
from 13,50€

Enjoy a relaxing round trip on the lake and discover the different shores of Lake Constance. Please note that it is not permitted to leave the boat at intermediate stops along the route.

FROM HAGNAU High season, daily	
DEPARTURE	ARRIVAL
09:40	11:15
10:15	12:40
11:15	13:40
13:15 ¹	15:40
13:40	15:15
15:15	17:40
17:15	19:40
17:40	19:15

FROM IMMENSTAAD High season, daily	
DEPARTURE	ARRIVAL
09:55	11:00
10:00	12:55
11:00	13:55
13:00 ¹	15:55
13:55	15:00
15:00	17:55
17:00	19:55
17:55	19:00

FROM FRIEDRICHSHAFEN High season, daily	
DEPARTURE	ARRIVAL
09:30	13:25
10:30	14:25
12:30 ¹	16:25
14:30	18:25
14:30	18:25

FROM HAGNAU Low season, daily	
DEPARTURE	ARRIVAL
11:15	15:40
13:15	17:40

FROM IMMENSTAAD Low season, daily	
DEPARTURE	ARRIVAL
11:00	15:55
13:00	17:55

OTHER PORTS IN THE UPPER LAKE High season, daily		
Port	DEPARTURE	ARRIVAL
Langenargen	14:55	18:00
Kressbronn	15:15	17:40
Nonnenhorn	15:25	17:30
Wasserburg	15:35	17:20

¹ not on 15.07.

* Round trip on the regular service from any port of departure without disembarkation.



ROUND TRIPS FROM LINDAU

PANORAMA-FAHRT

Enjoy the round trip with shore description and discover the wonderful view of the Lindau shore as well as Bad Schachen.

TUESDAY - SUNDAY + ON HOLIDAYS		28 March - 17 May + 17 October - 05 November ⁴	
PORT	DEPARTURE	ARRIVAL	 €
Lindau Spielbank ²	12:00	13:30	15,80
Lindau Spielbank ²	14:00	15:30	15,80
DAILY ¹		18 May - 03 October	
MONDAY - FRIDAY ¹		04 - 15 October	
PORT	DEPARTURE	ARRIVAL	 €
Lindau Spielbank ³	13:00	14:30	15,80
Lindau Spielbank ³	15:00	16:30	15,80

¹ not on 16.06., 29.09. and not on 09.10.2023

² from 28.03. - 01.04. departure from Lindau

³ from 04.10. - 05.11. departure from Lindau

⁴ also on 30.10.2023

DREI-LÄNDER-RUNDFAHRT

The vessel sails close to the German, Swiss and Austrian shorelines to offer you a majestic view of the 3-country region. The boat's crew will give you plenty of interesting local facts during the cruise, while you can enjoy the landscape with a hot cup of tea or coffee.

SATURDAYS, SUNDAYS AND HOLIDAYS		02 April - 17 May + 11 September - 15 October	
DAILY		18 May - 10 September	
PORT	DEPARTURE	ARRIVAL	 €
Lindau	15:15	16:45	15,80

BREGENZER BUCHT

Enjoy the round trip with shore description and discover the wonderful view of the German-Austrian lake shore.

DAILY				18 May - 15 October ¹
PORT	DEPARTURE	ARRIVAL	€	
Lindau Spielbank ²	11:30	12:30	11,50	

ADDITIONAL TRIPS				
DAILY				29 May - 11 June + 29 July - 10 September ³
PORT	DEPARTURE	ARRIVAL	€	
Lindau Spielbank	17:00	18:00	11,50	

¹ not on 08 + 09 October

² from 04.10. - 15.10. departure from Lindau

³ not on 12 August

ALTE RHEIN FAHRT

The route takes you from Lindau along the Schachen shore and then across the „Obersee“ to the estuary of the Old Rhine. Admire the river landscape in this nature reserve situated on the border between Austria and Switzerland.

FRIDAYS				16 June + 29 September
PORT	DEPARTURE	ARRIVAL	€	
Lindau Spielbank	15:00	18:00	22,60	

Please note that this tour can only take place when the water level is suitable.

RORSCHACHER RUND TRIP*

Simply breathe in the fresh air, and enjoy the fantastic view with a refreshing drink. Varied shorelines and imposing landscapes roll past – take your guests on a cruise on one of our boats across the Bay of Rorschach.

SATURDAYS, SUNDAYS AND HOLIDAYS				02 April - 17 May + 11 September - 15 October
DAILY				18 May - 10 September
PORT	DEPARTURE	ARRIVAL	€	
Lindau	09:25	11:40	21,40	
Lindau	11:45	14:05	21,40	
Lindau	15:50	18:15	21,40	

Personal ID card required, Round trip on the regular service from any port of departure without disembarkation.

KLEINE SEERUNDFAHRT

Join us on a short tour of the lake. The one-hour round trip starts at Lindau harbour and invites you to relax. Find a suitable seat on our ship and enjoy the passing Lindau shore or the Bregenz Bay.

MONDAY - WEDNESDAY				17 April - 17 May
PORT	DEPARTURE	ARRIVAL	€	
Lindau	13:00	14:00	11,50	
Lindau	14:30	15:30	11,50	
Lindau	16:00	17:00	11,50	

More info at:





AUTUMN & WINTER AT LAKE CONSTANCE

ROUND TRIPS IN AUTUMN

A mythical atmosphere, a whole host of experiences, a golden glow: The autumnal combination of the exiting and the dreamy imbues the largest city in the Lake Constance four-country region. Our 1-hour autumnal cruises invite your guests to take a unique journey starting in Constance.

SATURDAYS		21 October - 18 November	
PORT	DEPARTURE	ARRIVAL	👤 €
Constance	13:30	14:30	13,50
Constance	15:30	16:30	13,50

ROUND TRIPS IN WINTER

Enjoy the fantastic view of the wintry lake together with your guests during the one-hour round trip.

SATURDAY AND SUNDAY		25 November - 17 December	
PORT	DEPARTURE	ARRIVAL	👤 €
Constance	16:30	17:30	13,50

FRIDAY - SUNDAY		24 November - 17 December	
PORT	DEPARTURE	ARRIVAL	👤 €
Lindau	16:30	17:30	13,50

SCENIC CRUISES ON THE SHIP

FROM CONSTANCE & MEERSBURG

OSTERBRUNCH



Make Easter a quite special experience for your guests with a cruise onboard: Allow the expanse of the lake to unfold its magnificence during an exquisite brunch buffet. Give your guests a feast for the senses for the entire family to enjoy.

SUNDAY				9 April
3-hour round trip with brunch buffet				
PORT	BOARDING	DEPARTURE	ARRIVAL	👤 €
Meersburg	10:00	10:30	13:30	69,00

MONDAY				10 April
3-hour round trip with brunch buffet				
PORT	BOARDING	DEPARTURE	ARRIVAL	👤 €
Constance	10:00	10:30	13:30	69,00

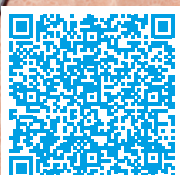
FROM CONSTANCE & MEERSBURG

SPARGEL-GENUSS



Known as the "vegetable of emperors" by the local Baden people, asparagus is one of the culinary highlights of the region. Glide over the lake with a gentle breeze, and indulge yourself with a delicious 3-course asparagus menu. Let your guests experience spring in a quite special way.

SUNDAY			16 April – 14 May
3-hour round trip with 3-course menu			
PORT	DEPARTURE	ARRIVAL	👤 €
Constance	11:10	14:55	64,00
Meersburg	11:50	15:40	64,00



More info for scenic cruises:

FROM CONSTANCE & LINDAU
MUTTERTAGSFAHRT



Thank you, dear Mother! This will be the words of your guests to their mothers during a cruise with lunch or coffee and cake. A perfect setting to talk to one another, laugh together and enjoy the live music on board.

SUNDAY		2 – 2.5-hour round trip with lunch or coffee & cake		14 May
PORT	DEPARTURE	ARRIVAL	👤 €	
Constance	10:30	13:00	49,00 ¹	
Lindau	10:30	13:00	49,00 ¹	
Constance	15:00	17:00	34,00 ²	
Lindau	15:00	17:00	34,00 ²	

¹ incl. one course meal

² incl. 1 piece of cake or pie plus fresh filter coffee

FROM CONSTANCE & MEERSBURG
GRILL-FAHRT

As the sun sinks slowly into the lake, your guests will enjoy a tempting buffet with delicious BBQ specialities.

FRIDAY + SATURDAY		2 – 3-hour round trip with BBQ buffet		19 May - 30 September*
PORT	DEPARTURE	ARRIVAL	👤 €	
Constance	18:10	21:25	54,00	
Meersburg	18:50	20:55	54,00	

* not on 15 July and 12 August

STIMMUNGSVOLLES
WEINPRÖBLE

During the 3.5-hour tour, you will experience the pleasure of wine in an atmospheric setting. In addition to tasting a Secco and three wines, you will be served a cheese plate with bread. The tour is accompanied by live music.

SUNDAY		Round tour with wine tasting and musical entertainment		20 Mai + 23 September
PORT	DEPARTURE	ARRIVAL	👤 €	
Überlinger	14:10	18:00	50,00	



EXCLUSIVE ENJOYMENT ON A ROUND TRIP

For offers with this symbol, the enjoyment offer does not take place as a round trip on regular service, but outside on an exclusive round trip.





FROM CONSTANCE & MEERSBURG
PIZZA-PASTA-FAHRT

"Little Italy", ahoy: Standing at the ship's rail with a glass of wine, your group can watch on the setting sun, and enjoy an Italian evening with a large pizza and pasta buffet.

WEDNESDAY		24 May - 27 September	
2-3-hour round trip with pizza & pasta buffet			
PORT	DEPARTURE	ARRIVAL	👤 €
Constance	18:10	21:25	44,00
Meersburg	18:50	20:55	44,00

WEINPRÖBLE
IN LAKE ÜBERLINGEN

During an 3.5-hour round trip in Lake Überlingen, we offer a tasting of 6 different wines. The wine tasting is accompanied by a Vesper plate and mineral water.

FRIDAY			16 June + 15 September
Wine tasting of 6 wines incl. Vesper plate			
PORT	DEPARTURE	ARRIVAL	👤 €
Meersburg	15:25	19:10	46,00
Constance	16:10	19:40	46,00

WEINGENUSS
IN THE UPPER LAKE

A cruise for real connoisseurs. During a 3-4 hour round trip we offer a tasting of 8 different wines. The wine tasting is accompanied by a Vesper plate and mineral water.

FRIDAY		23 June	
Wine tasting of 8 wines incl. Vesper plate			
PORT	DEPARTURE	ARRIVAL	👤 €
Friedrichshafen	14:30	18:25	49,00
Immenstaad	15:00	17:55	49,00
Hagnau	13:40	17:40	49,00

FROM ÜBERLINGEN
BAYRISCHES FRÜHSTÜCK

Completely laid back, enjoying a leisurely Sunday breakfast with Bavarian specialties while letting the landscape of Lake Constance unfold its visual splendour - what a wonderful way to start a day of leisure.

SUNDAY		02 July + 10 September	
3.5-hour round trip with Bavarian breakfast			
PORT	DEPARTURE	ARRIVAL	👤 €
Überlingen	10:10	14:00	40,00

FROM CONSTANCE & MEERSBURG HERBSTSCHLEMMEREI

Autumnal speciality with an extraordinary view. On time for October, your guest will experience the traditional southern German dish „Schlachtplatte“ in a unique setting.

SUNDAY + TUESDAY
3.5-hour round trip
with Schlachtplatte* menu **01 + 03 October**

PORT	DEPARTURE	ARRIVAL	👤 €
Constance	12:10	15:55	39,00
Meersburg	12:50	15:15	39,00

* local dish with boiled pork belly and freshly cooked Blutwurst and Leberwurst (sausages) accompanied by sauerkraut and mashed potatoes.

FROM CONSTANCE & MEERSBURG ZWIEBELKUCHEN-FAHRT

Shimmering golden yellow in the autumnal sunshine, the beautiful sloping vineyards glide past your guests as they indulge in onion tart accompanied by a scrumptious „Suser“ (local new wine). Autumnal feeling, ahoy.

DAILY
2.5 – 3.5-hour round trip
with onion tart and „Suser“ **04 - 15 October**

PORT	DEPARTURE	ARRIVAL	👤 €
Constance	15:10	18:25	29,00
Meersburg	15:50	17:55	29,00

FROM CONSTANCE GÄNSE-SCHMAUS

St. Martin's Goose festival delicacies. November, and it's finally time to enjoy a scrumptious goose dinner again. We will pamper your group with a varied 3-course goose dinner menu during an enchanting boat tour.

SATURDAY
1.5-hour round trip
with 3-course menu **11 + 18 November**

PORT	DEPARTURE	ARRIVAL	👤 €
Constance	18:30	20:00*	84,00

* Stay onboard and enjoy your evening until midnight.






ADVENTSFAHRTEN

Experience together with your guests a 1-hour round trip with a fantastic view of the wintry lake and enjoy fresh coffee and a piece of cake or pie in the meantime.

SATURDAY UND SUNDAY
2-hour round trip with coffee and cake 25 November – 17 December

PORT	DEPARTURE	ARRIVAL	 €
Constance	16:30	17:30	26,00

FRIDAY - SUNDAY
2-hour round trip with coffee and cake 24 November – 17 December

PORT	DEPARTURE	ARRIVAL	 €
Lindau	16:30	17:30	24,00

GASTRO OFFERINGS

BODENSEE FERRIES*

FRIEDRICHSHAFEN – ROMANSHORN



FULL-DAY OFFER

Lunch bag:
A filled roll (sausage meat or cheese), an apple, a chocolate bar, a 0.5l fruit drink € 8,00 / person

MORNINGS

Small Swiss "Zmorge" breakfast:
A croissant and coffee (from the pot) € 6,00 / person

Small "Schwabian" breakfast:
A butter pretzel and coffee (from the pot) € 5,00 / person

AFTERNOONS

Coffee & Cake package:
One portion of cake (according to season) with cream, and coffee (from the pot) € 6,50 / Person

The 45-minute trip is recognized as rest time

You are taking the ferry between Friedrichshafen and Romanshorn to arrive stress-free at your destination? Then why not give your guests an extra treat with one of our following onboard gastro offerings.

* The transit must be purchased separate (bus transport service incl. passengers: € 160).

Boat travel & admission

-  Lake Dwellings of Unteruhldingen
-  Car and tractor museum
-  Meersburg Castle and Arenenberg Castle in Mannenbach
-  Rheinfall Schaffhausen
-  Blumeninsel Mainau
-  Sea Life Constance
-  Stadtführung Constance
-  Zeppelin-Museum
-  Kunstmuseum Lindau, Kunsthaus Bregenz
-  Seebühne Bregenzer Festspiele
-  Pfänderbahn



EXCURSION TIPS AT LAKE CONSTANCE

The best position from which your group can enjoy Lake Constance and its alpine panorama is from the water – on one of BSB's numerous boat tours.

Admission tickets to the main attractions can be purchased in combination with your boat tour ticket.

The most beautiful destinations for excursions by boat

- ~ Mainau Island
- ~ Meersburg Castle
- ~ Unteruhldingen Reptile House
- ~ Sea Life Constance
- ~ Constance guided tour
- ~ Car and tractor museum
- ~ Lindau Art Museum
- ~ Arenenberg Castle in Mannenbach
- ~ Zeppelin Museum Friedrichshafen
- ~ Kunsthaus Bregenz (Art exhibition centre)
- ~ Pfänderbahn Bregenz (cable car)



BREGENZER FESTSPIELE

„MADAME BUTTERFLY“

The Japanese geisha Cio-Cio-San, called Butterfly, revels in happiness when she is taken as a wife by U.S. Navy Lt. B. F. Pinkerton. Love finds its peak in a brilliant duet, but the soldier's warship takes him back to his homeland.

Madame Butterfly can be experienced on the lake stage for another summer. For the moving story, stage designer Michael Levine invented a magical platform in Lake Constance with the finely drawn, Japanese-looking paper.

The musical direction is taken over in the proven manner of conductor Enrique Mazzola.

With our event ship MS Graf Zeppelin we bring your guests across the lake directly to the festival stage of the Bregenz Festival. To set the mood for an unforgettable evening, your guests will enjoy our 3-course festival menu including drinks on board. To round off the evening, we serve a midnight soup on the return trip.

FESTSPIELKREUZFAHRT

FRIDAYS			21 + 28 July + 04 + 11 August
PORT	DEPARTURE	ARRIVAL	LAKE STAGE TICKETS CAT. 4 €
Constance	17:00	02:00	266,00
Friedrichshafen	18:20	00:45	266,00
Festspielbühne	after performance	20:10	



You have already purchased your theatre tickets? Simply book the boat trip and menu for € 164.00 (available on all dates).



Japanese glass noodle salad with peanuts, baked vegetables & ginger vinaigrette

Braised ox cheeks or chickpea vegetable curry (please reserve in advance)

Coconut mousse with peach & crispy topping

Evening soup served on return journey:
Asian potato soup (with bacon)



SCHIFF-BUS TRANSFER

Boat travel from the port of Meersburg to Wasserburg to the port of Bregenz (scheduled service). The return journey following the performance is by bus from the port of Bregenz to your starting destination.

Earlier departures possible. Please note the timetable.

Performances begin at 9:15 p.m. on July dates and 9 p.m. on August dates.

on all performance days			
PORT	DEPARTURE	DEPARTURE*	👤 €
Meersburg	15:25	16:25	38,00
Hagnau	15:40	16:40	37,00
Immenstaad	15:55	16:55	36,00
Friedrichshafen	16:30	17:30	34,00
Langenargen	16:55	17:55	31,00
Kressbronn	17:15	18:15	29,00
Nonnenhorn	17:25	18:25	29,00
Wasserburg	17:35	18:35	27,00
Bregenz Port arrival	18:22	19:22	

* on 12.8. boat change in Lindau

FESTSPIEL-SHUTTLE

From the ports of Lindau and Bad Schachen to the lake stage and back, with welcome drink.

on all performance days			
PORT	DEPARTURE	DEPARTURE	👤 €
Bad Schachen*	19:15	ca. 00:00	23,00
Lindau	19:55	ca. 00:15	23,00
Festspielbühne	nach Spielende	20:20	

* Please note that the Festspiel shuttle can only travel to and from Bad Schachen if weather and water level permit. If the port Bad Schachen can not be approached, we provide a bus transfer to Lindau for you. From Lindau you will then take the festival shuttle to the festival stage Bregenz.

More info at:





Current information about other tours to events around the lake, are available at

www.bsb.de

EVENTS AT LAKE CONSTANCE

EXPERIENCE THEM BY BOAT

It is not just the matchless landscape around Lake Constance that makes it so popular, but also its unique and spectacular range of events. Whether they be hosted in Constance, Lindau or Friedrichshafen. All around Lake Constance there are superlative events to be enjoyed. And that's not all. You can effortlessly travel to numerous of these events by boat. For some events at Lake Constance, we also offers special highlights on the boat itself.

We hope to offer you and your guests an unforgettable boating trip experience for the following events in 2023:

- ~ Accompanying trip to the Regatta RUND UM
- ~ Seehasenfest Friedrichshafen (Spectator ship)
- ~ Hausherrenfest Radolfzell
- ~ Hafenfest UHldingen (Spectator ship)
- ~ Uferfest Langenargen (Spectator ship)
- ~ Schweizer Nationalfeiertag (Spectator ship)
- ~ Reichenauer Weinfest-Shuttle
- ~ Constanceer Seenachtfest
- ~ and more under www.bsb.de/veranstaltungen

SEEHASENFEST SPECTATOR SHIP FRIEDRICHSHAFEN

SATURDAY				15 July
PORT	BOARDING	DEPARTURE	ARRIVAL	👤 €
Constance	20:15	20:30	00:30	42,00
Meersburg	-	21:00	24:00	42,00
Friedrichshafen	-	21:30	23:15	20,00

HAUSHERRENFEST RADOLFZELL

SUNDAY			16 July
PORT	DEPARTURE	ARRIVAL	👤 €
Radolfzell	21:00	23:30	30,00
Iznang	21:15	23:15	30,00

UFERFEST SPECTATOR SHIP LANGENARGEN

SATURDAY			29 July
PORT	DEPARTURE	ARRIVAL	👤 €
Lindau	20:30	00:15	35,00
Wasserburg	21:00	23:45	35,00
Langenargen	21:45	23:00	20,00

SEENACHTFEST CONSTANCE SWR 3 SHIP

SATURDAY, ROUND TRIP			12 August	
PORT	BOARDING	DEPARTURE	ARRIVAL	👤 €
Constance	18:00*	20:00	00:00**	40,00

* Free entry to the harbour area from 5 pm

** stay onboard and enjoy your evening until 2 am

SEENACHTFEST CONSTANCE SWR 4 SHIP

SATURDAY, ROUND TRIP WITH MUSIC			12 August
PORT	DEPARTURE	ARRIVAL	👤 €
Überlingen	20:00	01:00	40,00
Dingelsdorf	20:15	00:40	40,00

SPECTATOR SHIPS SEENACHTFEST CONSTANCE

SPECTATOR SHIPS			12 August
PORT	DEPARTURE	ARRIVAL	👤 €
Constance	21:15	23:15	36,00
Unteruhldingen	21:00	23:20	36,00
Meersburg	21:00	24:00	36,00
Hagnau	20:45	23:45	36,00
Immenstaad	20:30	23:30	36,00
Friedrichshafen	20:00	00:40	36,00
Langenargen	20:30	00:15	36,00
Kressbronn	20:15	00:15	36,00
Nonnenhorn	20:05	00:25	36,00
Wasserburg	19:55	00:35	36,00
Bad Schachen*	19:45	00:45	36,00
Lindau	19:30	01:00	36,00
Radolfzell	19:50	00:35	36,00
Iznang	20:00	00:25	36,00

* only when the water level is sufficient

... AND MANY MORE TRIPS
TO EVENTS.

More info for
events:



FAQ*

* for groups travelling on regular services (not applicable to pleasure cruises or events).

WHERE DO I GET TICKETS FOR MY GROUP?

Group passenger tickets can be obtained from the ticket counters at the embarkation points. Group prices are valid for 10 or more full-paying persons.

CAN I GET ADVERTISING MATERIALS?

Visit www.bsb.de/info-service to request advertising materials free of charge.

DO I HAVE TO PRE-REGISTER MY GROUP?

Please pre-register groups of 10 or more persons at least 3 working days prior to travel, at gruppen@bsb.de or www.bsb.de/reisegruppenanmeldung. Group registrations that include an additional dining service can be made up to 10 days prior to start of travel, subject to availability. When you make a pre-registration, we will check the capacity on your selected route. Even if we do not reserve seats, we greatly appreciate your assistance in pre-registering your travel group. This helps us to efficiently manage the capacity utilisation of our vessels. With bookings that include an additional dining service for your boat trip, cancellations may be made free of charge up to 8 days prior to the start of travel. For cancellations made 7 days or less prior to the start of travel, you will be charged the cost of the additional service.

CAN I MAKE A SEATING RESERVATION?

A seat reservation is included for groups where an additional dining service has been booked in advance.

IS THERE ANY FOOD AVAILABLE ON BOARD?

To ensure that we have sufficient personnel and food onboard for groups, we recommend you select one of our group menus. You can choose two set meals from our group

menus and pre-order for your group. Please contact us to place your order.

WHAT HAPPENS IF OUR GROUP IS SMALLER ON THE DAY OF TRAVEL THEN THE NUMBER REGISTERED?

No problem. You only have to pay for the travel tickets you actually need. Other conditions apply to trips with an additional dining service included. Please ask when making your reservation.

WHAT SHOULD I NOTE WHEN PRE-REGISTERING A GROUP?

We will need you to provide us with an address, your preferred date of travel, the number of persons (adults/children), the precise time of travel and your preferred port of departure.

AM I ALSO REQUIRED TO PRE-REGISTER A SCHOOL GROUP?

Yes, all groups of 10 or more persons should be pre-registered for travel. For school groups, we also need to know the number of persons accompanying the group, and the number of schoolchildren and students aged 6-15 years old and 16-24 years old.

HOW DO I MAKE THE PAYMENT?

You will receive an e-mail confirmation following the pre-registration. Present this confirmation at the ticket counter of the port of departure in order to obtain your tickets directly before your boat trip. You can pay in cash, by EC or credit card. Payment on account is also available by prior agreement. Rorschach, Bregenz, Iznang, Bad Schachen and Mannenbach are exceptions here. Please contact us regarding these embarkation points.



BOOK CONVENIENTLY NOW ONLINE OR PERSONAL

A boat trip is part of a visit to Lake Constance, because on board great views combine the gentle sound of waves and a relaxing time out. The White Fleet of the BSB operate between all the the top destinations on Lake Constance. Services range from round trips, themed cruises to exclusive events. There is something for all tastes, so that the day on the remains unforgettable.

Would you like more information about our commission scale or are you interested in becoming our sales partner and getting exclusive access to our B2B webshop? Then let us know about your interest.

For individual event & group bookings send your request to gruppen@bsb.de. We look forward to being able to advise you personally.



Zdenka Vanha
Group travel
on scheduled services

Tel. 07531 3640-3668
gruppen@bsb.de



Viktoria Kiefer
Rundtrips from Lindau

Tel. 07541 9238-3671
gruppen@bsb.de



Birgit Neldner
Events

Tel. 07531 3640-3663
birgit.neldner@bsb.de



More info at:

HOW TO GET HERE



Access Friedrichshafen
 Parking: Seeparkplatz
 Amount: 12
 Distance to port: 450 m
 ca. 6 walking minutes

Access Lindau
 Parking: Ladestraße 17-22
 Amount: 10
 Distance to port: 2 km
 ca. 25 walking minutes

Access Bregenz
 Parking: Reichstr. 18
 Amount: 11
 Distance to port: 450 m
 ca. 6 walking minutes

These maps are provided for guidance and to help users quickly assess the relevant distances; they are not true to scale. Please contact us in advance for information about parking facilities.

General information




-  Überlinger-See-Zone (A)
-  Upperlake-Zone (B)
-  2-Country-Zone (C)

RATES¹

YOUR TICKET	MINI *		SHORT DISTANCE *		ONE ZONE		TWO ZONES		THREE ZONES		LINIE 4		UNTERSEE MINI **	
	Single	Return	Single	Return	Single	Day Ticket	Single	Day Ticket	Single	Day Ticket	Single	Day Ticket	Single	Return
Adult	5,40	10,80	7,40	14,80	9,60	17,80	13,00	25,60	17,80	34,00	6,10	12,20	4,10	8,20
Students age: 6–15 years	2,70	5,40	3,70	7,40	4,80	8,90	6,50	12,80	8,90	17,00	3,00	6,00	2,00	4,00
Students age: 16–24 years	3,80	7,60	5,20	10,40	6,70	12,50	9,10	17,90	12,50	23,80	4,30	8,60	2,90	5,80

Single ticket: without exiting at the ports along the way.

 Please note: only zone tickets are valid on the connection with this marking.

¹ Prices in Euro per person; tickets are only valid on the lines/ zones above and for the ships of BSB and Vorarlberg Lines.

* For direct connections with disembarkation at the nearest port, we offer the short-distance ticket or, for short journey times, the **MT** Miniticket.





** On the connection between Iznang and Radolfzell we offer the **U-MT** Untersee-Miniticket.



The organiser rates are valid for groups of 10 or more full-paying adults. All prices are only valid pre-booking in the group department.

All prices for boat tours are gross prices and include prices and include the applicable value added tax.

With our Day Pass Zone Tickets, you can travel comfortably all day in the corresponding zones and get on and off at any time.

-  Constance– Friedrichshafen (Linie 1)
-  Friedrichshafen – Bregenz (Linie 2)
-  Constance– Überlingen (Linie 3)
-  Radolfzell – Reichenau (Linie 4)



SEE YOU SOON

ON BOARD

BODENSEE-SCHIFFSBETRIEBE GMBH

Port Constance
Hafenstraße 6 ~ 78462 Constance
Tel. +49 (0) 7531 3640-0

Port Friedrichshafen
Seestraße 23 ~ 88045 Friedrichshafen
Tel. +49 (0) 7541 9238-0


Port Lindau
Schützingerweg 2 ~ 88131 Lindau
Tel. +49 (0) 8382 27584-0

gruppen@bsb.de
www.bsb.de

Notice:

Timetables and offers are subject to change and errors excepted. Information without legal guarantee. The basic provisions of the Lake Constance Passenger Tariff apply, as well as the General Terms and Conditions for Event Trips, if applicable. For external services, we act only as an agent.

 = Price per person (group rate)

 = Price per person (commission basis)